

***One machine in hand***  
***Test if you want***

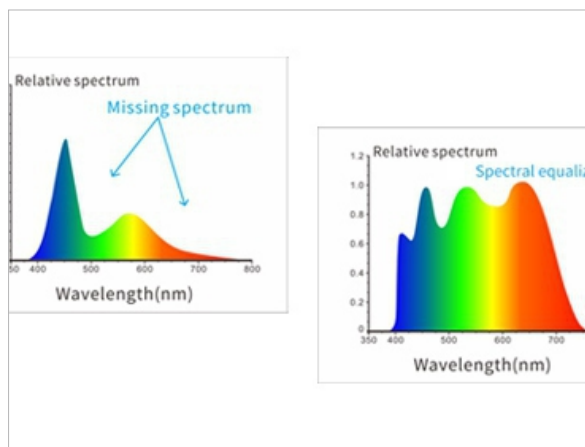


# PRODUCT FEATURES



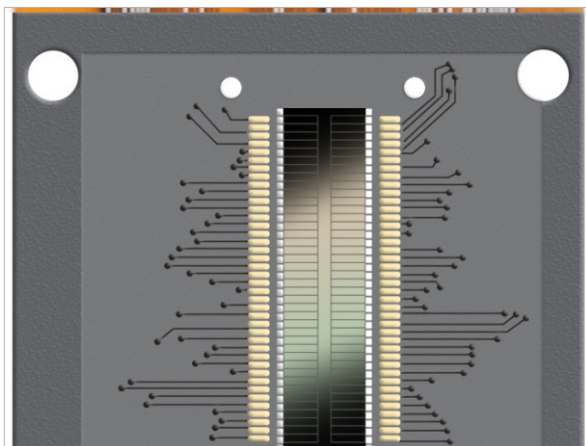
## 1. Novel and fashionable appearance design based on ergonomics

The position of the hand grip and the measurement button are carefully designed to meet different gripping habits. The smooth and fine surface is derived from the art of high-precision appearance processing.



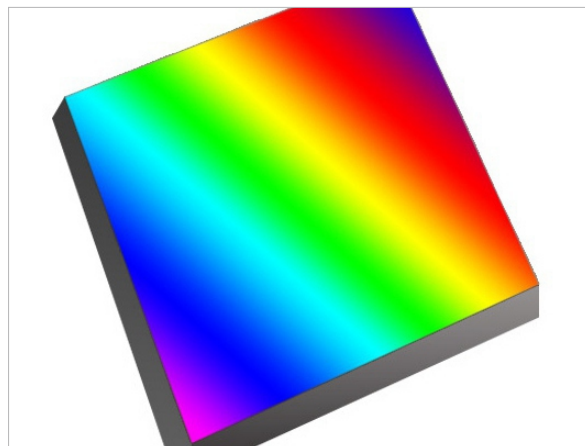
## 2. Adopt full-band balanced LED light source

The full-band balanced LED light source ensures sufficient spectral distribution in the visible light range, avoids the lack of spectrum of white LEDs in a specific band, and ensures the measurement speed of the instrument and the accuracy of the measurement results.



## 3. Silicon photodiode array (double 24 array) sensor

The dual-24 array sensor with larger area has strong light but not saturate, higher sensitivity of low light and wider spectral response range, which ensures the measurement speed, accuracy, stability and consistency of the instrument. Mastering the core technology and fully compatible with international standards.



## 4. Grating Spectrophotometric technology

Using grating spectrophotometric technology, it has higher resolution and makes color measurement more accurate.



## 5. Place the base safely to ensure that the whiteboard is not dirty



## 6. Professional whiteboard, a promise that will never change color forever





### 7. Fast charging

Special fast charging method, low-voltage reminder to charge or use of off-hours to charge, to ensure the capacity and life of the battery (note: frequent repeated charging of the battery is more harmful).



### 8. Single measuring aperture can accurately meet the needs of sample measurement

Spectrocolorreader CR7 (basic) is equipped with a Ø8mm platform aperture to meet your sample measurement needs.



### 9. Excellent inter- instrument error and repeatability to ensure the consistency of measurement data of multiple equipment

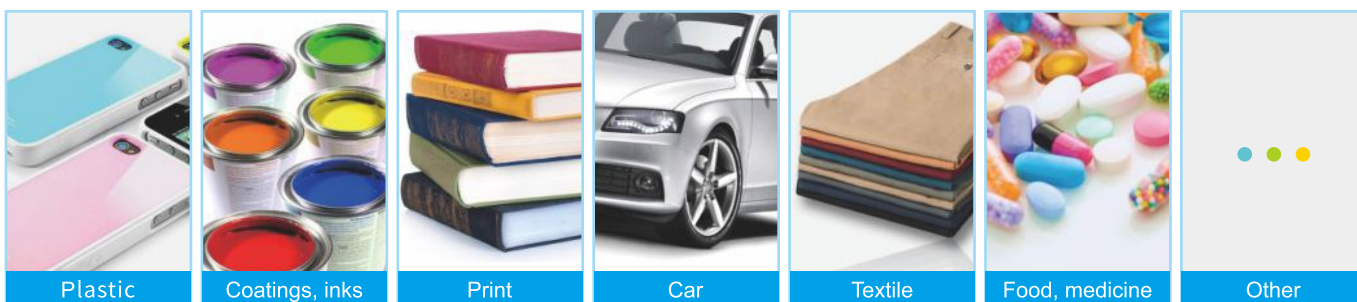


### 10. Diversified data display

Spectrocolorreader CR7 (basic) can intuitively display reflectance (reflectance at a specific wavelength specified by the user), sample chromaticity value, color difference value/graph, pass/fail result, color simulation, color offset and other data. It is convenient to view and also greatly improves the user's work efficiency.

## APPLICATION INDUSTRY

Single measuring aperture, used for accurate color difference control in plastic electronics, paint ink, textile and clothing printing and dyeing, printing, ceramics and other industries.



## OPTIONAL ACCESSORIES

The instrument is equipped with a variety of accessories: micro printer, powder test box, placing base; Meet customer measurement needs.

Micro printer: easy to carry, without computer can continuously print out the measurement of various parameters, easy to save.



Powder test box: Easy to use, focusing on powdered target measurement.



Place the base: easy to place quickly, take the machine to use, prevent dust from entering, save space, the base is stable, will not fall.



## PRODUCT PARAMETERS

**Model :** CR7 (Basic)

**Optical geometry :** D/8 (diffuse illumination, 8° direction reception) SCI measurement Comply with standard CIE No.15,GB/T 3978,GB 2893,GB/T 18833,ISO7724-1,ASTM E1164,DIN5033 Teil7

**Characteristics :** Customized single measurement aperture for accurate color difference control in plastic and electronic, paint and ink, textile and garment printing and dyeing, printing, ceramics and other industries

**Integrating sphere size :**  $\phi 40\text{mm}$

**Light source :** Combined full-spectrum LED light source

**Spectroscopic method :** Planar grating

**Sensor :** Silicon photodiode arrays (dual row 24 groups)

**Wavelength range :** 400~700nm

**Wavelength interval :** /

**Semiband Bandwidth :** 10nm

**Measurement range :** L:0~100 Reflectivity: can test the reflectance at a specific wavelength specified by the user (default 550nm)

**Measurement aperture :** Single aperture:  $\phi 8\text{mm}$

**Focusing method :** Fixed Focus

**Specular component :** SCI

**Color space :** CIE LAB,XYZ,Yxy,LCh

**Color difference formula :**  $\Delta E^*ab$ ,  $\Delta E^*00$

**Other colorimetric indexes :** /

**Observer angle :** 10°

**Illuminant :** D65,A,F2(CWF)

**Displayed data :** Reflectivity(at 1 specific wavelengths specified by the user)chromaticity value, color difference value/graph, pass/fail result, color simulation, color offset

**Display Accuracy :** 0.1

**Measurement time :** Approx. 1.5s

**Repeatability :** Chromaticity value: MAV/SCI,  $\Delta E^*ab$  within 0.1 (When a white calibration plate is measured 30 times at 5 second intervals after white calibration)

**Inter-instrument error :** MAV/SCI, within  $\Delta E^*ab$  0.4(Average for 12 BCRA Series II color tiles)

**Measurement method :** Single measurement, average measurement (2~99 times)

**Locating method :** Stabilizer locating

**Size :** LxWxH=81X71X214mm

**Weight :** About 460g

**Battery power:** Lithium battery, 6000 times in 8 hours

**Illuminant life span:** 5 years, more than 3 million times measurements

**Display :** TFT true color 3.5inch, capacitive touch screen

**Data port :** USB is for charging only, does not support quality control software

**Data storage :** 500 standard samples, 1,0000 samples

**Language :** Simplified Chinese, English, Traditional Chinese

**Operating temperature range :** 0~40°C, 0~85%RH (no condensation), altitude< 2000m

**Storage temperature range :** -20~50°C, 0~85%RH (no condensation)

**Standard Accessories :** Power adapter, data cable, manual, black and white calibration box, protective cover, wrist strap, single aperture:  $\phi 8\text{mm}$  platform aperture

**Optional Accessories :** USB micro printer, powder test box ,Place the base

**Notes :** Technical parameters are for reference only, subject to the actual sales of products

## GUANGDONG THREENH TECHNOLOGY CO., LTD.



Spectrophotometers



Colorimeters



Haze Meters



Gloss Meters



Test Charts



Light Booths

### ★ CONTACT US



web:www.3nh.com



Email:3nh@3nh.com



Tel:0086-020-82880288



Add: 6-8th floors, Building B33, Low Carbon Headquarters Park, Xincheng Road No.400, Zengcheng District, Guangzhou, Guangdong Province, China